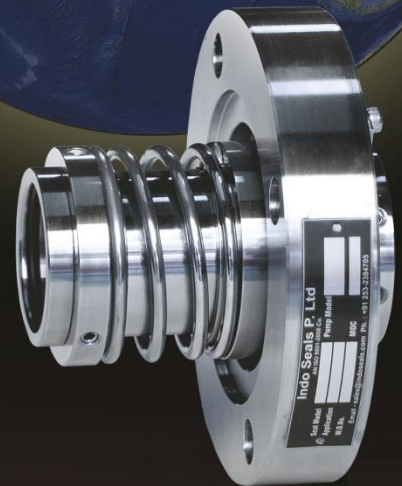




indoseals™

An associate of ND Thakare
ISO 9001-2015



Mechanical Seals Total Solutions

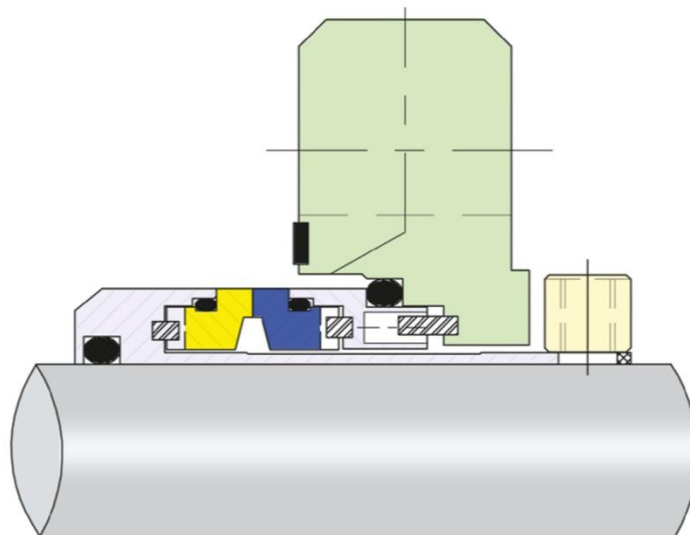
Multispring Cartridge Seal - ISPL 2413

- Single seal with cartridge assembly
- Springs protected from medium
- Solid faces increase life of seal
- Easy to install

Applications:

- Pulp and paper industries
- Sugar industry
- Suitable for most applications

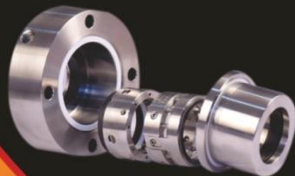
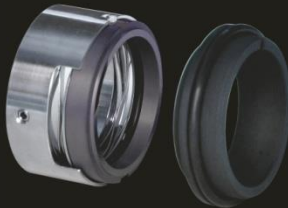
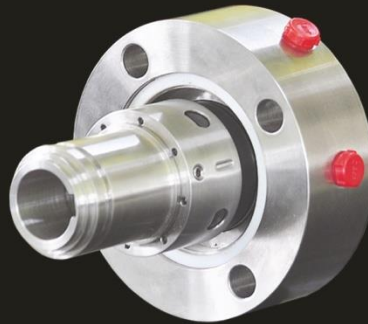
Clean component design and large clearances between the seal and shaft sleeve. Robust construction, both seal faces provide maximum face stability in high pressure and high temperature applications improving seal longevity. Large contact area provided to seal face drive for preventing damage to faces in stop/start applications and viscous fluids.



ISPL-2413 Multi Spring Cartridge Type

Certified By:





- Nashik
- Pune
- Mumbai
- Kolhapur
- Hyderabad
- Bangalore
- Vijaywada
- Chennai
- Ahmedabad
- Barodra
- Kolkata
- New Delhi
- Sharanpur
- Lucknow
- Raipur
- Jaipur

Contact us:

For Sales:
sales@indoseals.com
Cell No.: +91 7447439162

For Services:
service@indoseals.com
Cell No.: +91 9881301631



An associate of ND Thakare

Indoseals P. Ltd.

Mfgs. of Mechanical seals & spares, Rotary unions

Regd. Office & factory: W-97A, First Floor, MIDC, (behind Hardy Spicer) Ambad,
Nashik - 422010, Maharashtra, INDIA
Phone: +91 253 2384705; +91 253 2384575
Fax: +91 253 2384705, Cell: +91 9881301631
e-mail: sales@indoseals.com ; info@indoseals.com; Website: www.indoseals.com

Certified By:

