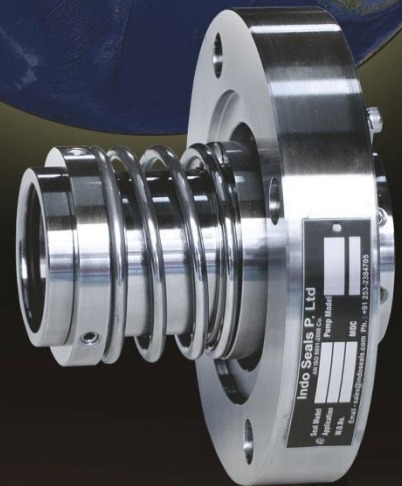




indoseals™

An associate of ND Thakare
ISO 9001-2015



Mechanical Seals Total Solutions

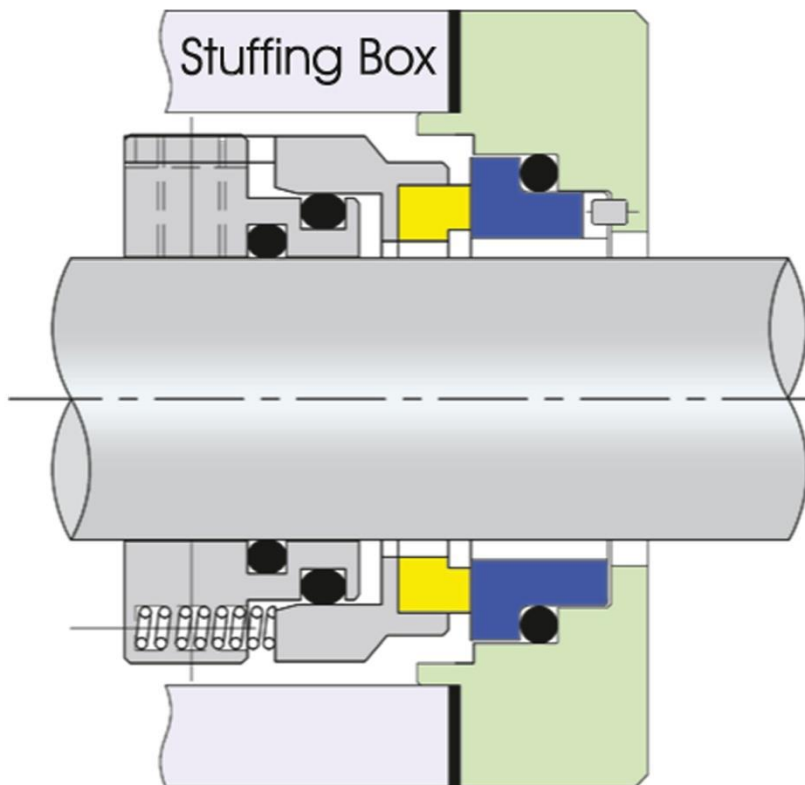
RTBS Seal - ISPL 2422

- *Balanced, externally mounted*
- *Robust design*
- *Easy to install and highly reliable*
- *Seal faces of dry running capability*

Applications:

- *Mixers, agitators, feeders*
- *Autoclave and fermenters*
- *Most of top entry vessel types*

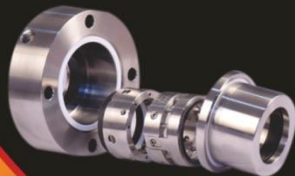
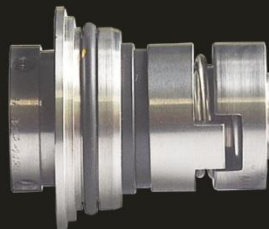
Seal faces are visible and thus can be easily inspected.
Seal faces are balanced for high pressure and can run dry without face wear. Very low shaft or sleeve wear. Self aligning design helps to compensate for pump housing misalignment.



ISPL-2422 RTBS Seal

Certified By:





- Nashik
- Pune
- Mumbai
- Kolhapur
- Hyderabad
- Bangalore
- Vijaywada
- Chennai
- Ahmedabad
- Barodra
- Kolkata
- New Delhi
- Sharanpur
- Lucknow
- Raipur
- Jaipur

Contact us:

For Sales:

sales@indoseals.com
Cell No.: +91 7447439162

For Services:

service@indoseals.com
Cell No.: +91 9881301631



An associate of ND Thakare

Indoseals P. Ltd.

Mfgrs. of Mechanical seals & spares, Rotary unions

Regd. Office & factory: W-97A, First Floor, MIDC, (behind Hardy Spicer) Ambad,
Nashik - 422010, Maharashtra, INDIA
Phone: +91 253 2384705; +91 253 2384575
Fax: +91 253 2384705, Cell: +91 9881301631
e-mail: sales@indoseals.com ; info@indoseals.com; Website: www.indoseals.com

Certified By:

